

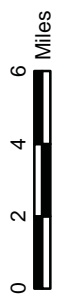
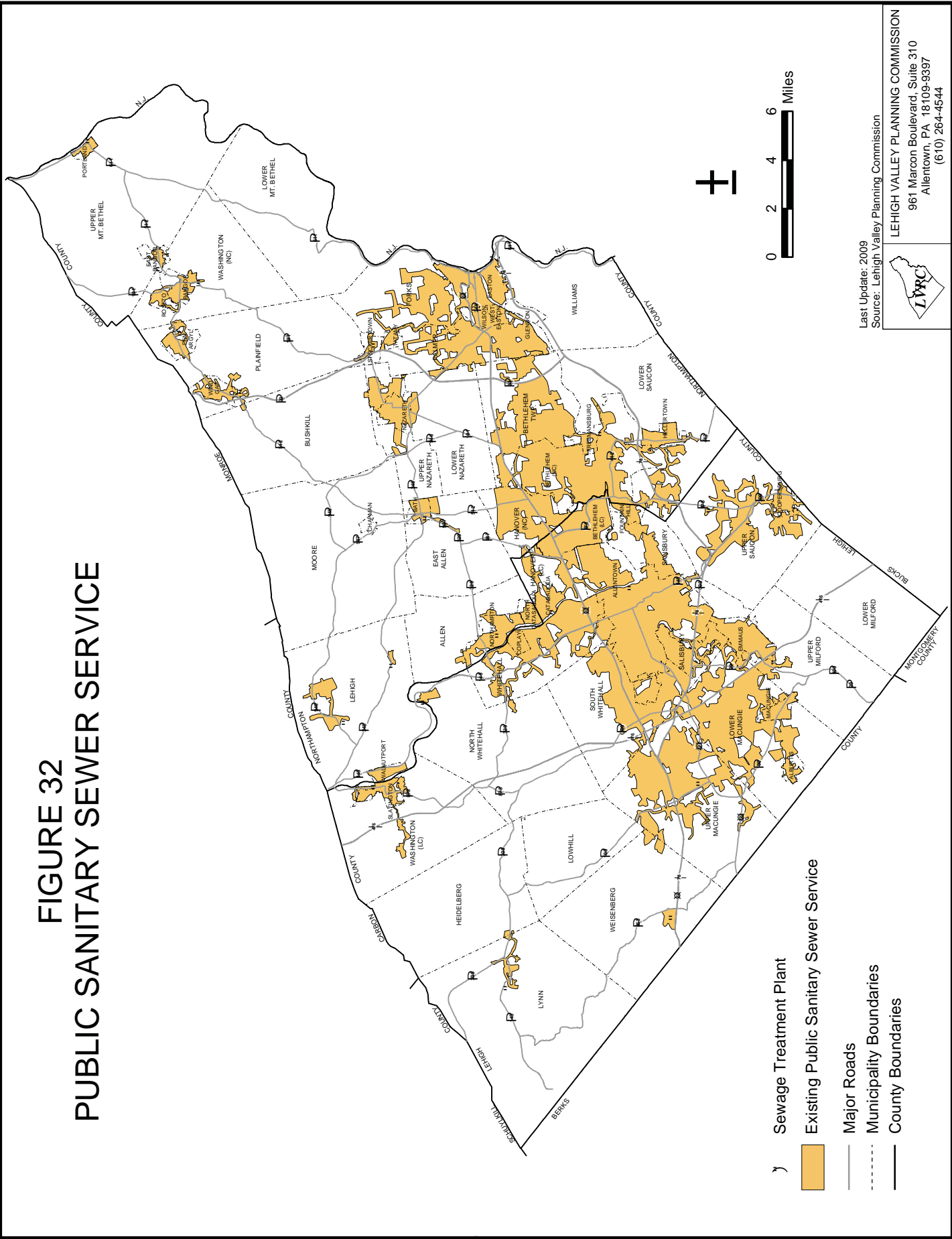
## Chapter 5






### UTILITIES AND TRANSPORTATION: Profile and Usage Trends

Note: Refer to the following LVPC publications for more information on this subject:


- *Water Supply and Sewage Facilities Plan Update* — 1995
- *Water Supply and Sewage Facilities Plan Supplement* — 2000
- *Water Supply Assessment Report* — 2002
- Act 167 - Stormwater Management Plans for the following watersheds: Little Lehigh Creek, Monocacy Creek, Nancy Run, Saucon Creek, Jordan Creek, Coplay Creek, Trout/Bertsch Creeks, Martins/Jacoby Creeks, Catasauqua Creek, Bushkill Creek, Hokendauqua Creek, Fry's Run, Maiden Creek Headwaters, Perkiomen Creek Headwaters and Sacony Creek Headwaters
- *Street Connectivity* — 2011
- *Transit Oriented Development* — 2011
- *Central New Jersey/Raritan Valley Transit Study - Pennsylvania Component* — 2010
- *The Transportation Improvement Program: FY 2013–2016*
- *Lehigh Valley Surface Transportation Plan* — 2011-2030
- *Creating Better Traffic Circulation* — 1996
- *Pedestrian and Bicyclist Safety Report* — 2006
- *2011 Traffic Trends*
- *Air Quality Conformity Analysis Report Volumes 1 and 2* — 2013
- *22/Tomorrow — A Corridor Planning Study* — 2001
- *Lehigh Valley Rail Freight Study* — 2007
- *Community Planning and Transit* — 1995
- *Traffic Safety in the Lehigh Valley 2006-2010*

# FIGURE 32 PUBLIC SANITARY SEWER SERVICE



-  Sewage Treatment Plant
-  Existing Public Sanitary Sewer Service
-  Major Roads
-  Municipality Boundaries
-  County Boundaries

Last Update: 2009  
 Source: Lehigh Valley Planning Commission



LEHIGH VALLEY PLANNING COMMISSION  
 961 Marcon Boulevard, Suite 310  
 Allentown, PA 18109-9397  
 (610) 264-4544

**TABLE 57  
PUBLIC SEWAGE TREATMENT PLANTS**

<b>Treatment Plant</b>	<b>Treatment Capacity</b>	<b>Sewage Flows<sup>1</sup> (2010)</b>
Lehigh County		
Allentown	40.000	35.070
Catasauqua	2.250	1.010
Lehigh County Authority		
Arcadia West (Weisenberg)	Plant offline	Not applicable
Wastewater Treatment Plant <sup>2</sup>	5.740	2.800 <sup>3</sup>
Wynnewood Terrace (North Whitehall)	0.060	0.049
Lynn	0.080	0.069
Slatington	1.500	1.279
Upper Saucon	2.500	1.680
Northampton County		
Bangor	1.900	1.550
Bath	0.510	0.317
Bethlehem	20.000	12.400
East Bangor	0.100	0.073
Easton	10.000	5.990
Lehigh		
Danielsville	0.300	0.176
Pennsville	0.060	0.010
Nazareth	1.600	1.320
Northampton	1.500	1.061
Pen Argyl	0.950	0.790
Portland	0.105	Not available
Stockertown	0.087	0.062
Wind Gap	1.000	0.866

<sup>1</sup>Flows reflect maximum 3 consecutive month average flows based on DEP's reporting procedure.

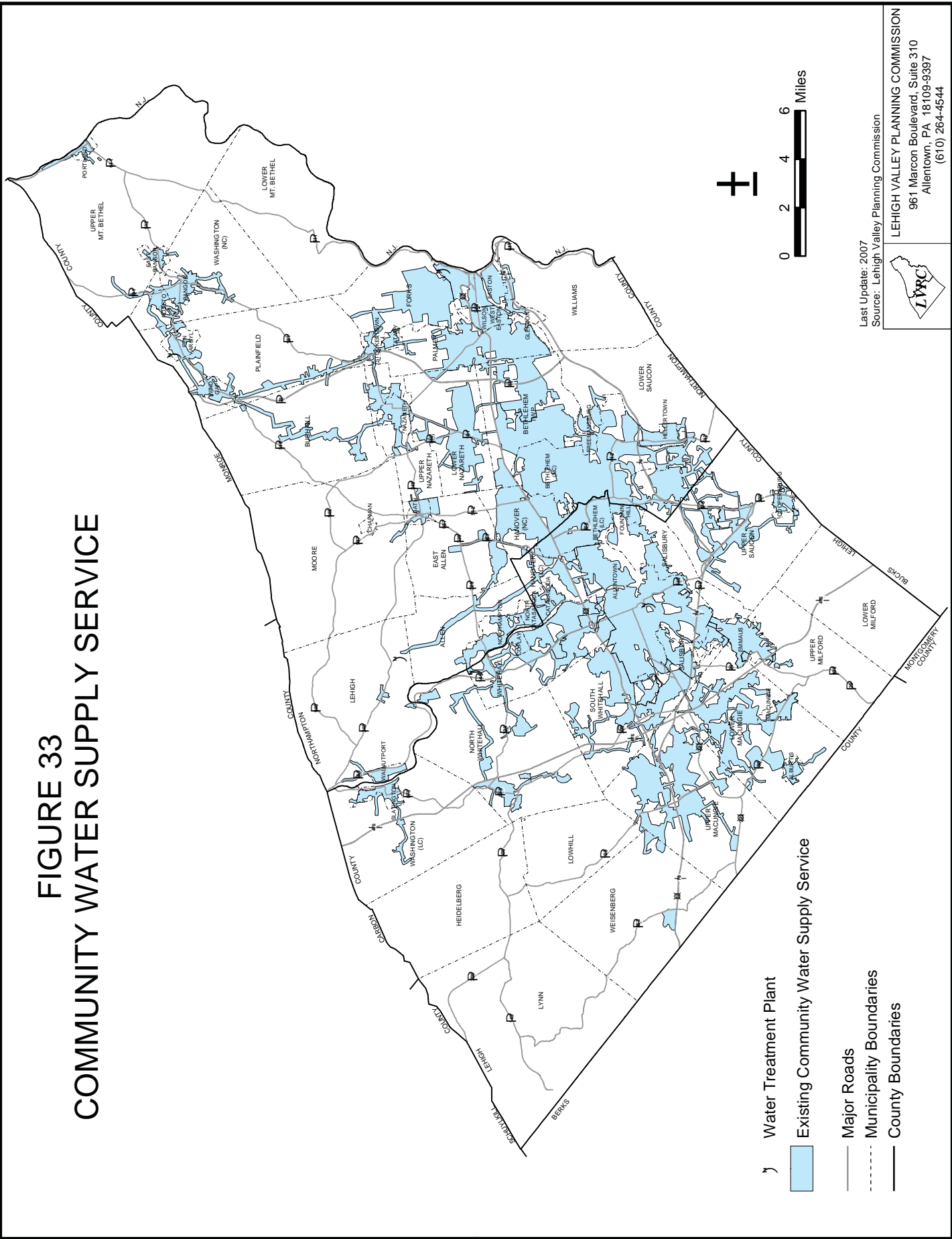
<sup>2</sup>Facility operated by Lehigh County Authority for pretreatment of industrial sewage prior to final treatment at the Allentown plant. Located in Upper Macungie Township.

<sup>3</sup>Average daily flow.

**Note:** All flows expressed in MGD (million gallons per day).

**Sources:** *Lehigh Valley Planning Commission, PA Department of Environmental Protection and municipal/authority records.*

# FIGURE 33 COMMUNITY WATER SUPPLY SERVICE



- Existing Community Water Supply Service
- Major Roads
- Municipality Boundaries
- County Boundaries

Last Update: 2007  
 Source: Lehigh Valley Planning Commission

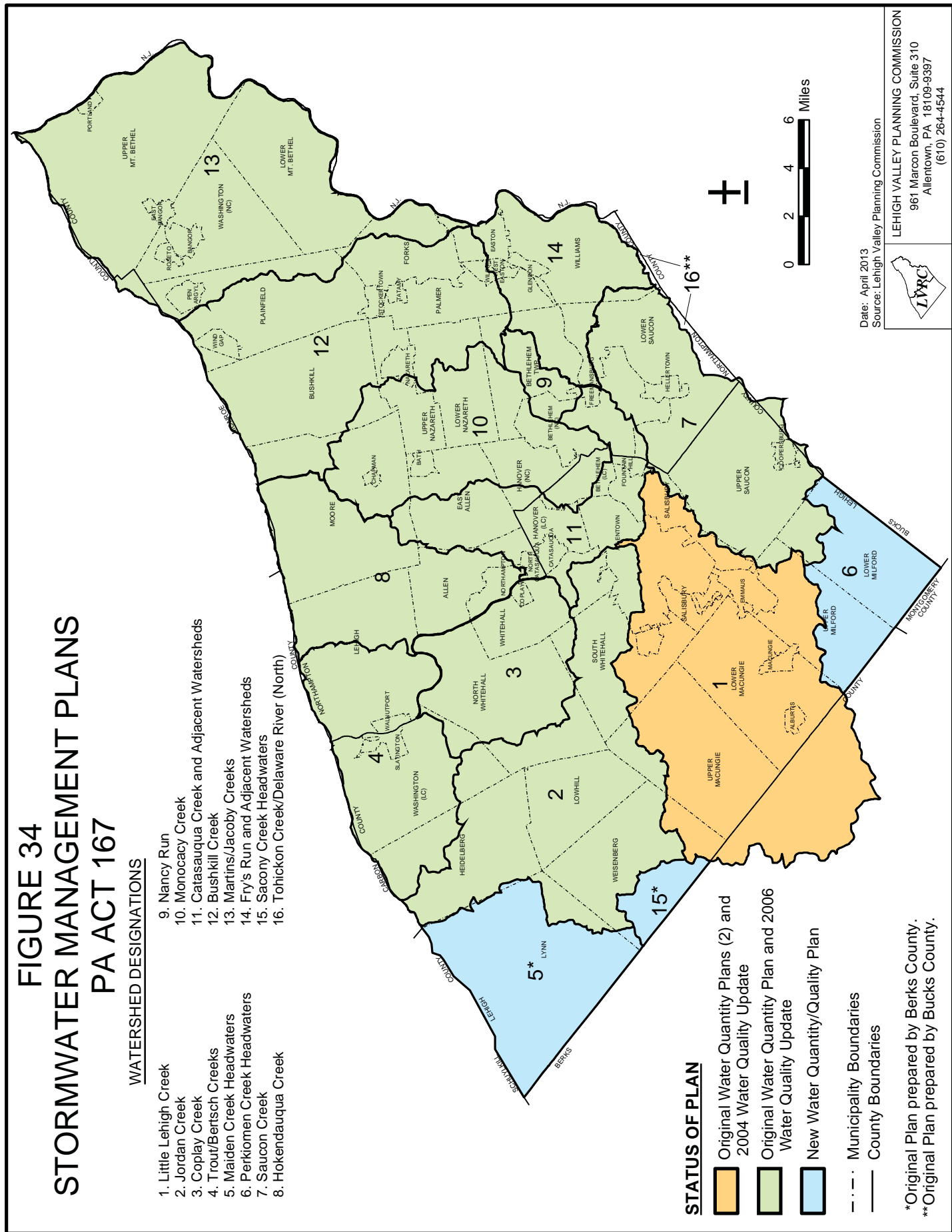
**LEHIGH VALLEY PLANNING COMMISSION**  
 961 Marcon Boulevard, Suite 310  
 Allentown, PA 18109-9397  
 (610) 264-4544



# FIGURE 34 STORMWATER MANAGEMENT PLANS PA ACT 167

## WATERSHED DESIGNATIONS

- 1. Little Lehigh Creek
- 2. Jordan Creek
- 3. Coplay Creek
- 4. Trout/Bertsch Creeks
- 5. Maiden Creek Headwaters
- 6. Perkiomen Creek Headwaters
- 7. Saucon Creek
- 8. Hokendauqua Creek
- 9. Nancy Run
- 10. Monocacy Creek
- 11. Catasauqua Creek and Adjacent Watersheds
- 12. Bushkill Creek
- 13. Martins/Jacoby Creeks
- 14. Fry's Run and Adjacent Watersheds
- 15. Sacony Creek Headwaters
- 16. Tohickon Creek/Delaware River (North)

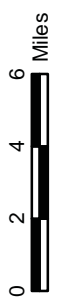


## STATUS OF PLAN

- Original Water Quantity Plans (2) and 2004 Water Quality Update
- Original Water Quantity Plan and 2006 Water Quality Update
- New Water Quantity/Quality Plan

- Municipality Boundaries
- County Boundaries

\*Original Plan prepared by Berks County.  
\*\*Original Plan prepared by Bucks County.

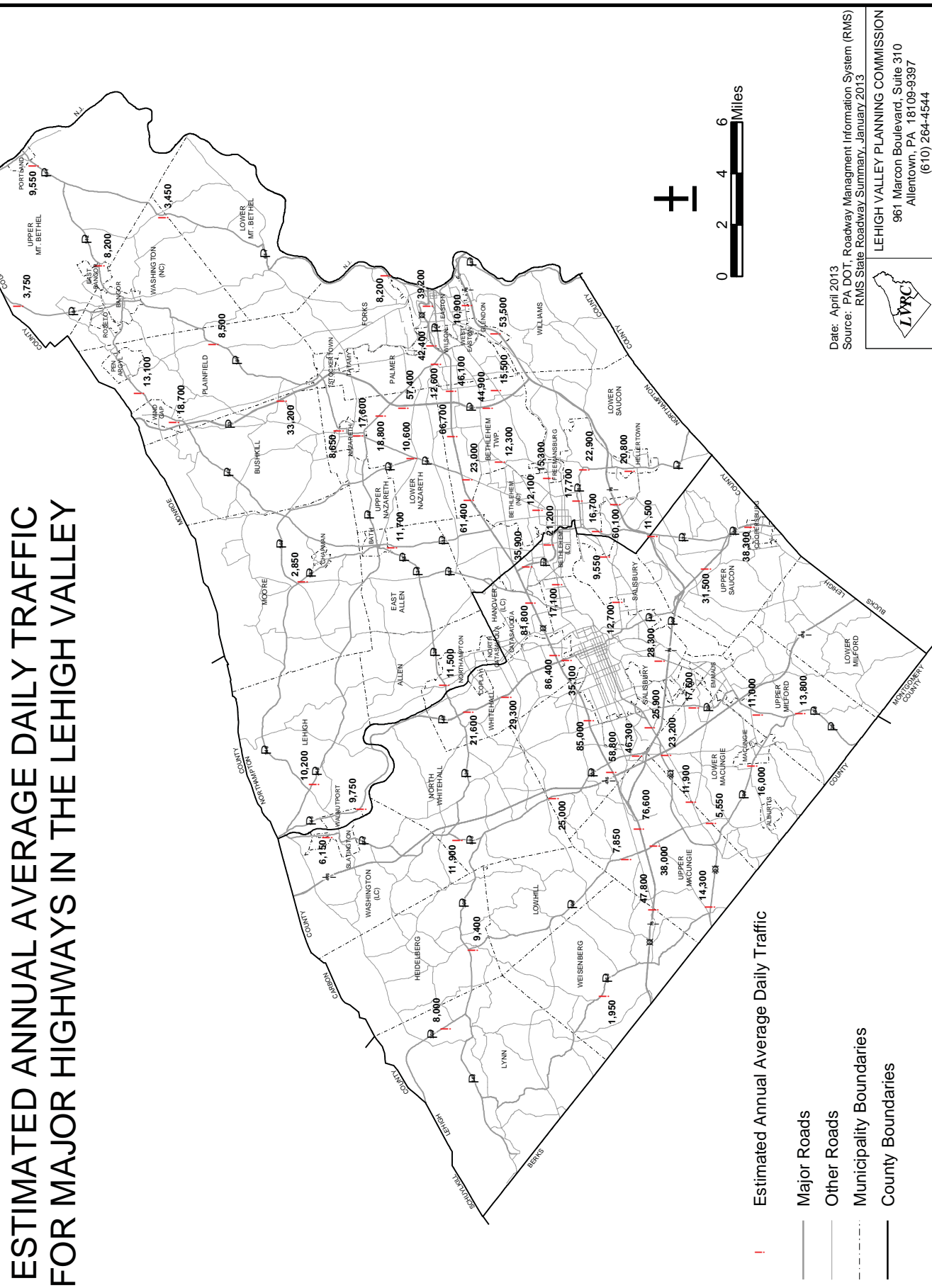


Date: April 2013  
Source: Lehigh Valley Planning Commission

**LEHIGH VALLEY PLANNING COMMISSION**  
961 Maroon Boulevard, Suite 310  
Allentown, PA 18109-9397  
(610) 264-4544



**FIGURE 35  
ESTIMATED ANNUAL AVERAGE DAILY TRAFFIC  
FOR MAJOR HIGHWAYS IN THE LEHIGH VALLEY**

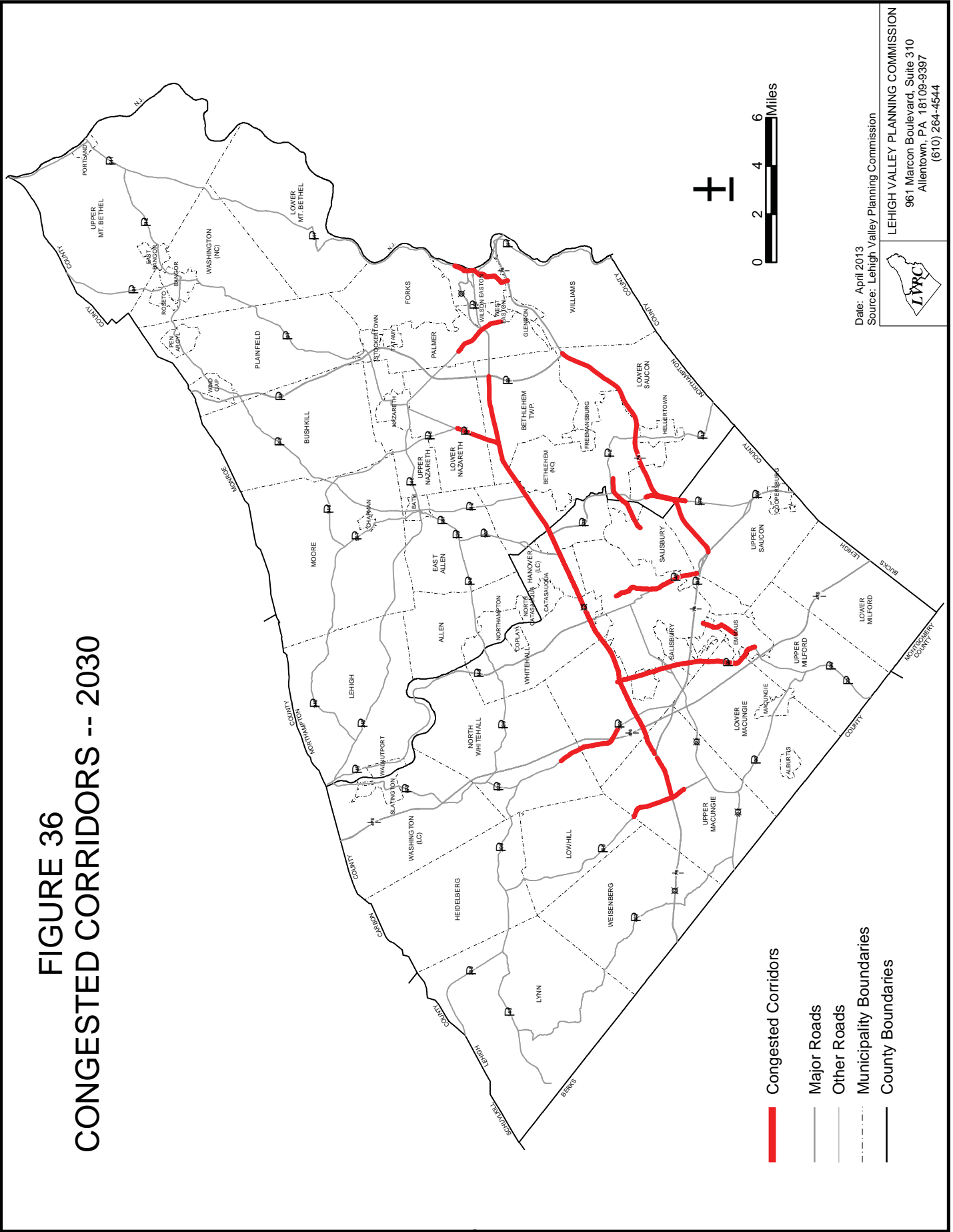


Date: April 2013  
Source: PA DOT, Roadway Management Information System (RMS)  
RMS State Roadway Summary, January 2013

**LEHIGH VALLEY PLANNING COMMISSION**  
961 Marcon Boulevard, Suite 310  
Allentown, PA 18109-9397  
(610) 264-4544



# FIGURE 36 CONGESTED CORRIDORS -- 2030



Date: April 2013  
 Source: Lehigh Valley Planning Commission

**LEVH VALLEY PLANNING COMMISSION**  
 961 Marcon Boulevard, Suite 310  
 Allentown, PA 18109-9397  
 (610) 264-4544



**TABLE 58**  
**PASSENGER CAR REGISTRATIONS: 2003-2012**

Year	Pennsylvania		Lehigh County		Northampton County	
	Total	% Change	Total	% Change	Total	% Change
2003	7,581,661		198,689		193,862	
2004	7,653,461	0.95	211,675	6.54	190,002	-1.99
2005	7,721,703	0.89	216,051	2.07	193,357	1.77
2006	7,701,845	-0.26	214,766	-0.59	194,179	0.43
2007	7,774,535	0.93	216,744	0.91	196,374	1.11
2008	7,817,110	0.54	218,055	0.60	197,814	0.73
2009	7,829,113	0.15	220,563	1.14	199,834	1.01
2010	7,839,661	0.13	222,920	1.06	200,507	0.34
2011	7,894,222	0.70	224,830	0.86	201,599	0.54
2012	7,901,771	0.10	224,059	-0.34	200,957	-0.32

Source: PennDOT Bureau of Motor Vehicles.

**TABLE 59**  
**LICENSED DRIVERS: 2003-2012**

Year	Pennsylvania		Lehigh County		Northampton County	
	Total	% Change	Total	% Change	Total	% Change
2003	8,369,579		209,250		217,238	
2004	8,430,147	0.72	212,659	1.63	221,358	1.90
2005	8,489,911	0.43	216,818	1.96	223,770	1.09
2006	8,566,282	0.90	220,421	1.66	226,278	1.12
2007	8,627,959	0.72	223,517	1.40	228,298	0.89
2008	8,659,389	0.36	225,620	0.94	229,227	0.41
2009	8,701,682	0.49	228,910	1.46	231,489	0.99
2010	8,737,175	0.41	230,454	0.67	232,475	0.42
2011	8,804,349	0.77	234,012	1.54	233,618	0.49
2012	8,840,824	0.41	235,521	0.64	234,080	0.20

Source: PennDOT Bureau of Driver Licensing.

**TABLE 60**  
**UTILIZATION OF THE LEHIGH VALLEY INTERNATIONAL AIRPORT: 2006-2012**

	2012	2011	2010	2009	2008	2007	2006
<b>TRAFFIC REPORT</b>							
<b>MAJOR AIRLINES</b>							
Passengers - Emplaned	57,690	95,279	95,635	52,220	36,367	36,230	33,617
- Deplaned	55,807	90,247	93,266	47,709	31,913	30,279	25,367
- Sub-Total	113,497	185,526	188,901	99,929	68,280	66,509	58,984
<b>REGIONAL AIRLINES</b>							
Passengers - Emplaned	304,795	341,631	325,114	323,557	355,849	391,145	361,313
- Deplaned	305,264	346,196	324,196	324,996	355,839	389,872	368,214
- Sub-Total	610,059	687,827	649,310	648,553	711,688	781,017	729,527
GRAND TOTAL	723,556	873,353	838,211	748,482	779,968	847,526	788,511
<b>AIRPORT OPERATIONS</b>							
Major Airlines	4,249	4,430	5,035	4,527	11,701	16,668	17,613
Regional Airlines	17,241	20,984	18,994	20,312	17,007	13,732	18,365
Military	608	658	786	775	943	932	1,447
General or Civil Aviation	30,914	33,695	35,333	34,596	44,036	44,177	45,887
Total Itinerant	53,012	59,767	60,148	60,210	73,687	75,509	83,312
Total Local	47,036	39,628	40,803	48,269	50,121	45,059	38,700
GRAND TOTAL	100,048	99,395	100,951	108,479	123,808	120,568	122,012

Source: Lehigh-Northampton Airport Authority.



**TABLE 61**  
**LEHIGH AND NORTHAMPTON TRANSPORTATION AUTHORITY (LANta)**  
**TOTAL PASSENGER TRIPS\***  
**1995-2012**

Fiscal Year**	Total Passenger Trips	Percent Change
1995	4,161,645	
1996	3,748,327	-9.9
1997	3,382,334	-9.8
1998	3,939,126	16.5
1999	4,038,721	2.5
2000	4,096,681	1.4
2001	4,290,692	4.7
2002	4,505,344	5.0
2003	4,768,533	5.8
2004	4,742,549	-0.5
2005	5,127,222	8.1
2006	5,617,000	9.6
2007	5,709,033	1.6
2008	5,680,000	-0.5
2009	5,505,748	-3.1
2010	5,475,055	-0.6
2011	5,766,487	5.3
2012	5,280,955	-8.4

\*Includes all LANtaBus passengers and all LANtaVan passengers in Lehigh and Northampton counties.

\*\*Fiscal year statistics from July 1 through June 30.

**Note:** LANta instituted a new fixed route system effective August 2011.

**Source:** *Lehigh and Northampton Transportation Authority.*

**TABLE 62**  
**LANtaVan RIDERSHIP\***  
**1995-2012**

Fiscal Year**	Total Passenger Trips	Percent Change
1995	324,962	
1996	328,707	1.2
1997	382,086	16.2
1998	403,241	5.5
1999	422,721	4.8
2000	425,722	0.7
2001	446,586	4.9
2002	484,658	8.5
2003	487,472	0.6
2004	486,225	-0.3
2005	473,000	-2.7
2006	476,000	0.6
2007	446,588	-6.2
2008	450,000	0.8
2009	437,579	-2.8
2010	431,210	-1.5
2011	502,734	16.6
2012	427,695	-14.9

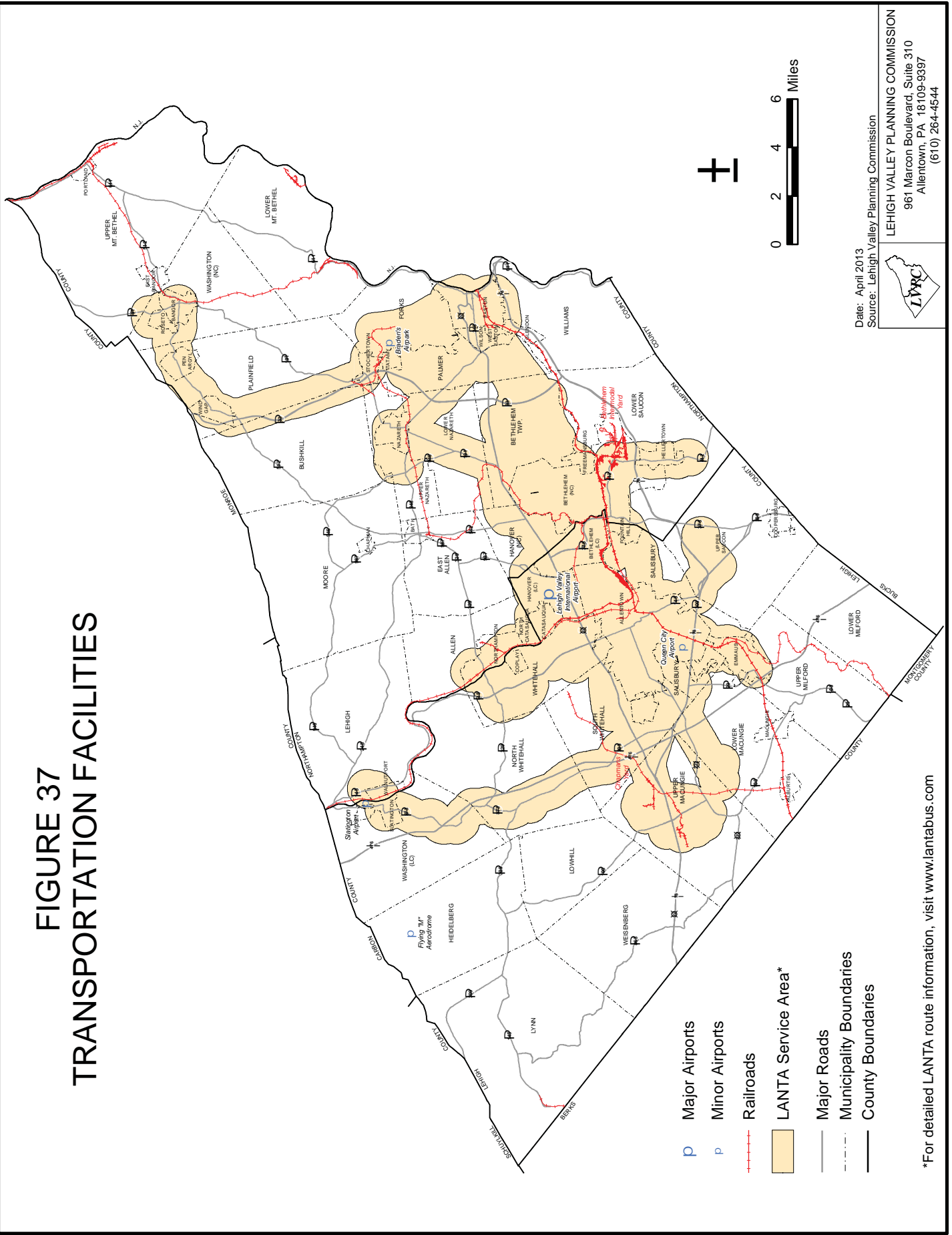
\*LANtaVan is the contracting agency for Easton Coach Co., a private, for-profit operator.

\*\*Fiscal year statistics from July 1 through June 30.

**Note:** LANta instituted a new fixed route system effective August 2011.

**Source:** *Lehigh and Northampton Transportation Authority.*

# FIGURE 37 TRANSPORTATION FACILITIES



- P Major Airports
- P Minor Airports
- Railroads
- LANTA Service Area\*
- Major Roads
- - - Municipality Boundaries
- County Boundaries

Date: April 2013  
 Source: Lehigh Valley Planning Commission

**LEHIGH VALLEY PLANNING COMMISSION**  
 961 Marcon Boulevard, Suite 310  
 Allentown, PA 18109-9397  
 (610) 264-4544



\*For detailed LANTA route information, visit [www.lantabus.com](http://www.lantabus.com)