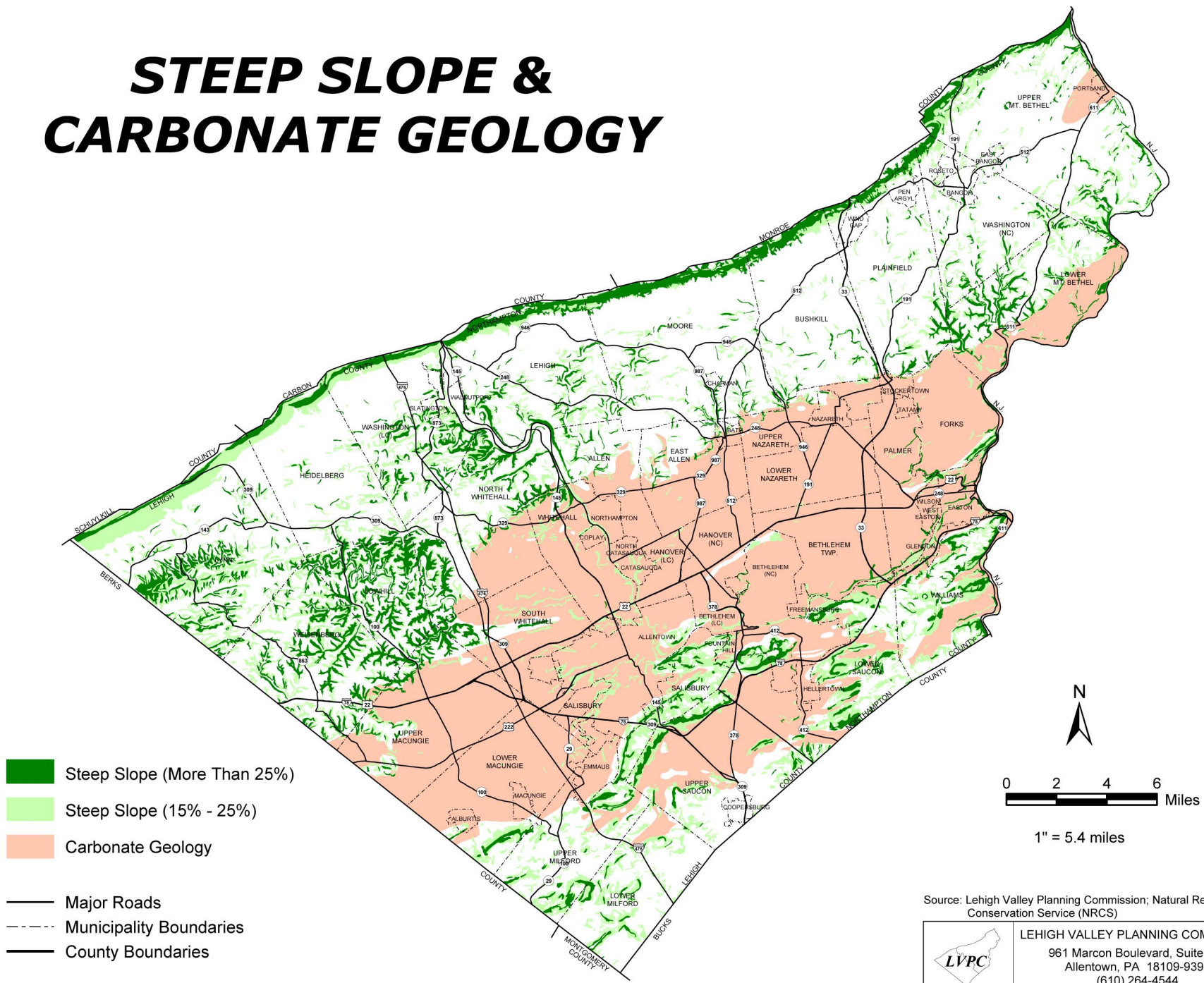
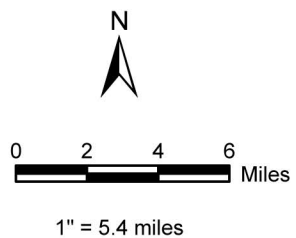


STEEP SLOPE & CARBONATE GEOLOGY



- Steep Slope (More Than 25%)
- Steep Slope (15% - 25%)
- Carbonate Geology

- Major Roads
- Municipality Boundaries
- County Boundaries



Source: Lehigh Valley Planning Commission; Natural Resource Conservation Service (NRCS)

LEHIGH VALLEY PLANNING COMMISSION
961 Marcon Boulevard, Suite 310
Allentown, PA 18109-9397
(610) 264-4544