

Estimated Existing Land Use

LEHIGH COUNTY

Municipality	Residential		Commercial		Industrial		Wholesale & Warehousing		Trans., Comm. & Utilities		Public & Quasi-Public		Parks & Recreation		Agriculture & Undeveloped		Total Acres
	Acres	%	Acres	%	Acres	%	Acres	%	Acres	%	Acres	%	Acres	%	Acres	%	
Alburtis	185	40.5%	6	1.2%	10	2.2%	-	0.0%	60	13.2%	16	3.4%	70	15.3%	110	24.1%	456
Allentown	3,563	30.9%	872	7.6%	867	7.5%	25	0.2%	2,907	25.2%	872	7.6%	1,588	13.8%	841	7.3%	11,535
Bethlehem (LC)	1,056	37.6%	319	11.4%	238	8.5%	10	0.3%	818	29.1%	124	4.4%	120	4.3%	126	4.5%	2,811
Catasauqua	325	38.1%	24	2.9%	34	4.0%	1	0.1%	219	25.7%	54	6.4%	52	6.1%	142	16.7%	853
Coopersburg	268	44.8%	65	10.9%	18	3.0%	1	0.2%	83	13.9%	32	5.4%	25	4.1%	106	17.7%	599
Coplay	200	49.9%	18	4.6%	15	3.6%	-	0.0%	95	23.7%	15	3.7%	26	6.5%	32	8.0%	401
Emmaus	826	44.5%	121	6.5%	81	4.3%	5	0.3%	423	22.8%	106	5.7%	209	11.2%	84	4.5%	1,855
Fountain Hill	222	45.7%	23	4.7%	18	3.8%	1	0.2%	91	18.8%	52	10.6%	31	6.4%	48	9.8%	486
Hanover Twp.	134	4.9%	414	15.2%	360	13.2%	7	0.2%	977	35.8%	132	4.8%	35	1.3%	672	24.6%	2,731
Heidelberg Twp.	2,657	16.8%	38	0.2%	36	0.2%	-	0.0%	441	2.8%	100	0.6%	1,647	10.4%	10,904	68.9%	15,823
Lower Macungie Twp.	4,840	33.7%	417	2.9%	543	3.8%	24	0.2%	1,715	11.9%	492	3.4%	1,414	9.8%	4,931	34.3%	14,376
Lower Milford Twp.	3,166	25.1%	52	0.4%	5	0.0%	-	0.0%	712	5.6%	182	1.4%	95	0.8%	8,408	66.6%	12,620
Lowhill Twp.	1,957	21.7%	89	1.0%	14	0.2%	-	0.0%	331	3.7%	43	0.5%	1,807	20.0%	4,796	53.1%	9,037
Lynn Twp.	3,418	12.8%	96	0.4%	83	0.3%	-	0.0%	665	2.5%	96	0.4%	2,964	11.1%	19,377	72.6%	26,700
Macungie	219	34.7%	23	3.6%	63	9.9%	-	0.0%	87	13.8%	29	4.6%	179	28.3%	33	5.2%	632
North Whitehall Twp.	5,346	29.3%	251	1.4%	899	4.9%	5	0.0%	1,128	6.2%	637	3.5%	1,722	9.4%	8,272	45.3%	18,260
Salisbury Twp.	2,696	37.4%	149	2.1%	73	1.0%	-	0.0%	765	10.6%	354	4.9%	1,397	19.4%	1,768	24.6%	7,202
Slatington	285	32.1%	20	2.3%	93	10.5%	2	0.2%	166	18.8%	109	12.3%	48	5.4%	165	18.6%	887
South Whitehall Twp.	2,954	26.8%	657	5.9%	657	6.0%	14	0.1%	1,616	14.6%	664	6.0%	700	6.3%	3,778	34.2%	11,040
Upper Macungie Twp.	3,807	22.7%	977	5.8%	1,126	6.7%	1,294	7.7%	1,854	11.0%	308	1.8%	791	4.7%	6,640	39.5%	16,797
Upper Milford Twp.	4,949	42.9%	73	0.6%	79	0.7%	5	0.0%	740	6.4%	146	1.3%	453	3.9%	5,081	44.1%	11,526
Upper Saucon Twp.	5,964	37.8%	245	1.5%	84	0.5%	71	0.5%	1,183	7.5%	844	5.3%	1,530	9.7%	5,863	37.1%	15,784
Washington Twp.	3,780	24.9%	182	1.2%	264	1.7%	11	0.1%	791	5.2%	126	0.8%	2,459	16.2%	7,565	49.8%	15,178
Weisenberg Twp.	4,367	25.4%	74	0.4%	118	0.7%	109	0.6%	689	4.0%	200	1.2%	275	1.6%	11,335	66.0%	17,167
Whitehall Twp.	2,367	28.8%	632	7.7%	1,055	12.8%	14	0.2%	1,189	14.5%	434	5.3%	734	8.9%	1,794	21.8%	8,217

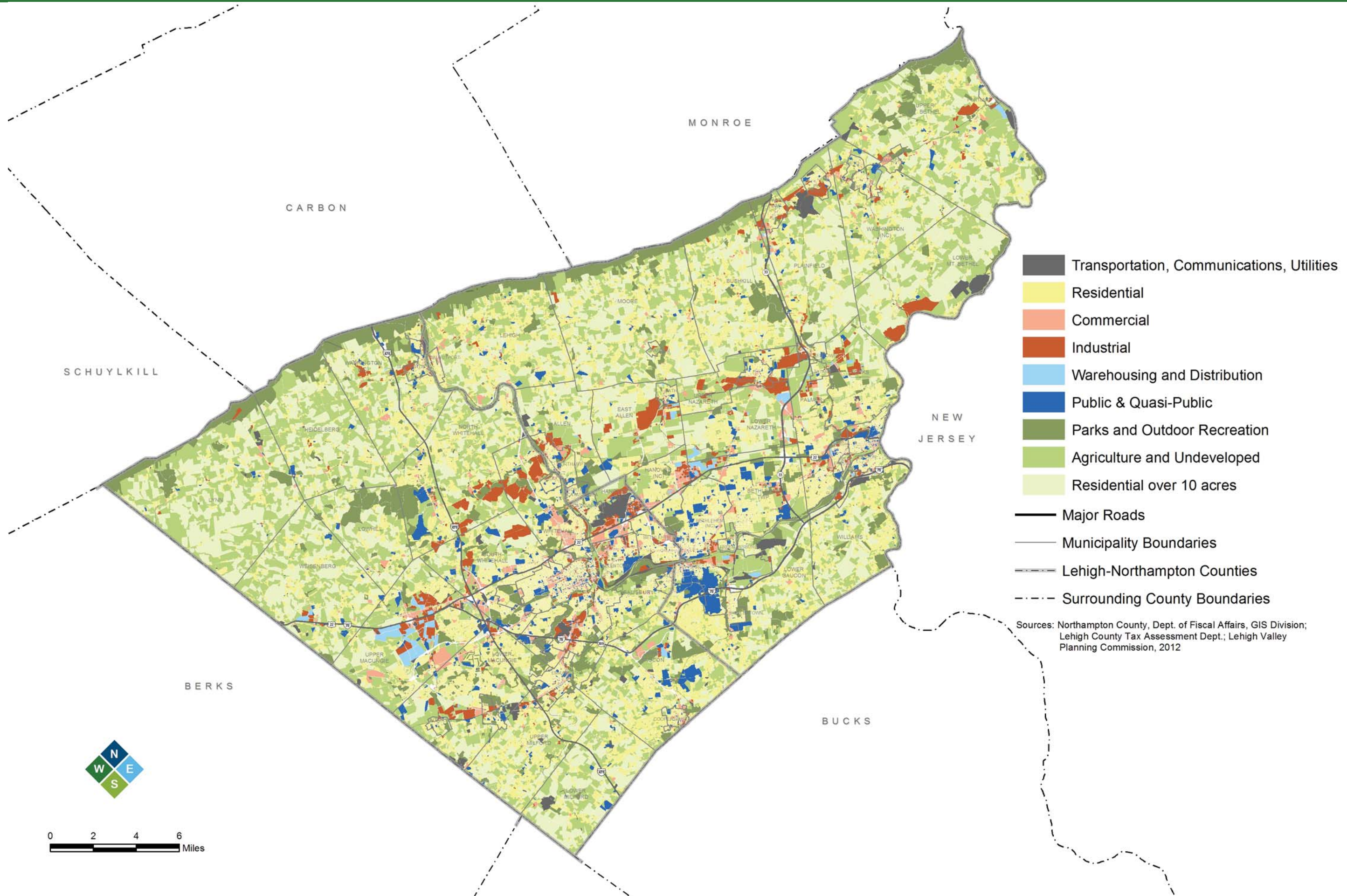
LEHIGH COUNTY	59,549	26.7%	5,838	2.6%	6,832	3.1%	1,597	0.7%	19,745	8.9%	6,167	2.8%	20,371	9.1%	102,873	46.1%	222,973
NORTHAMPTON COUNTY	67,713	28.0%	4,486	1.9%	7,536	3.1%	1,051	0.4%	18,602	7.7%	6,280	2.6%	20,821	8.6%	114,950	47.6%	241,438
LEHIGH VALLEY	127,262	27.4%	10,324	2.2%	14,368	3.1%	2,649	0.6%	38,347	8.3%	12,447	2.7%	41,191	8.9%	217,823	46.9%	464,411

Note 1: Rural residential lots > 10 acres, assigned 5 acres residential and the remainder to agriculture/undeveloped.

Note 2: River features included in agriculture/undeveloped.

Note 3: The estimated existing land use data incorporates updated land use interpretations by County Assessment offices and the LVPC. As such, comparisons to prior year estimated existing land use data will show a combination of actual land use changes and modified interpretations.

Sources: Lehigh and Northampton counties GIS Tax Assessment databases and LVPC GIS databases.



Lehigh Valley Profile and Trends

